

The Rototime RTT Series Gearbox

The Rototime RTT series is a high quality, Low Backlash, Stainless Steel Spiral Bevel Cubic Gearbox. The gearbox is used for precision speed reduction, increase torque or to manipulate direction of shaft rotation. The sophisticated electropolished (mirror finish) modular housing design allows several mounting options, such as motor flange, metric/inch Solid or Hollow shaft in any environment. The spiral bevel gears are heat treated and lapped for maximum strength, smooth rotation, and efficient tooth contact. The high axial ball bearings enable quiet operation with capacity to handle radial load. The double lip, UV protected oil seals insure environmental gear protection and no leak during pressure wash. The synthetic 460 oil enable safe operation of the gearbox. Available also with food safe oil!

Features

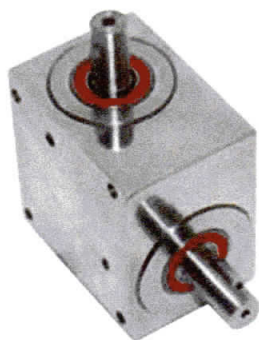
- Electropolished 416 or 316 Stainless Steel housing for clean look and sophistication
- Precision Crafted Spiral Bevel Gear is Heat Treated and Lapped for maximum strength and smooth rotation. Torque capacity up to 180Nm
- Double Lip, UV protected oil seal to prevent external contamination
- Modular, cubic housing design for mounting in any direction
- Metric or Inch shaft, or **Hollow Output Shaft**
- Motor Flange or shaft mount option
- Ratio reducer or increaser 1:1, 1.5, 1:2, 1:3
- Less than 7 Arcmin of backlash
- 98% efficiency

Elegance @ Style

Applications

Packaging, printing, converting, food process, and general speed and torque control. The Stainless Steel design for food safety and clean environment.

RT 10 Hollow, through



Electro Polish



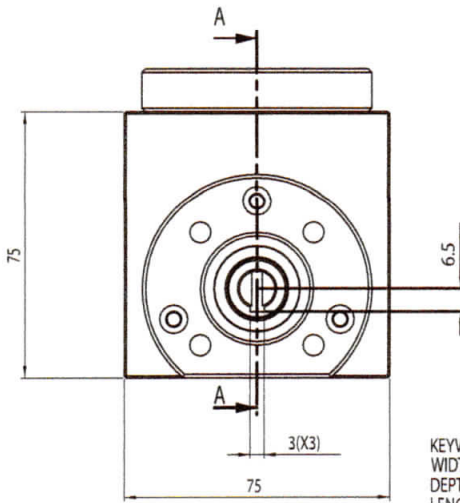
Spiral Bevel Mini-Gearbox

10mm Hollow or 14mm solid shaft

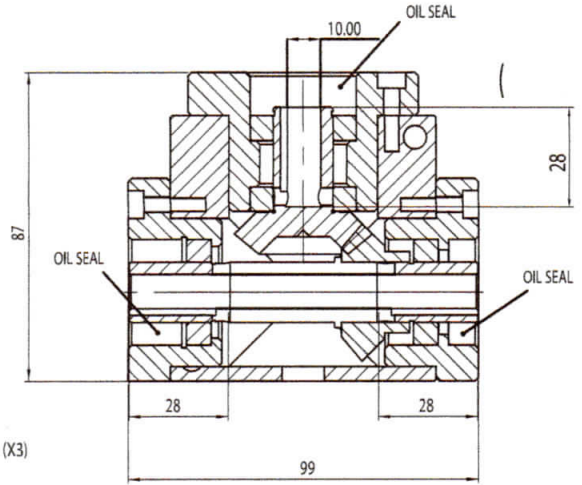
- 5,12 Nm, 3 Arcmin
- Ratio 1:1, 1:2, 2:1
- 416 Stainless Steel (Electro-Polish)
- Heat treated and Lapped Gears (low noise and reduced backlash)
- Double Lip Oil Seal (wash-down)
- High Load Ball Bearing (Radial and Axial)
- 13 month warranty

Metric Hollow or Solid Shaft

RT 10 Hollow, through



KEYWAY DETAILS (X3)
 WIDTH: - 3MM
 DEPTH: - 1.6MM
 LENGTH: - 24MM

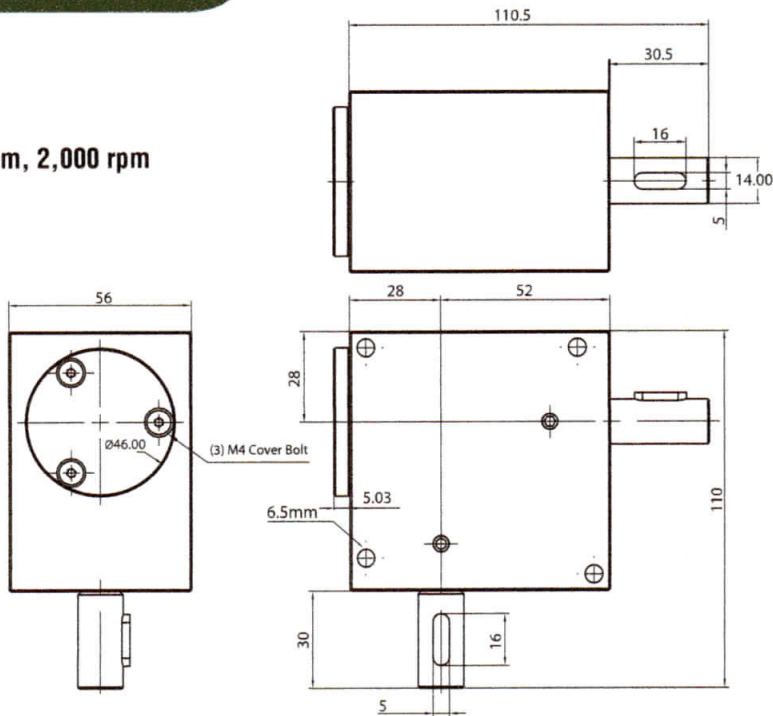


SECTION A-A

Torque 5 Nm, 2,000 rpm

RT 14 Solid Shaft

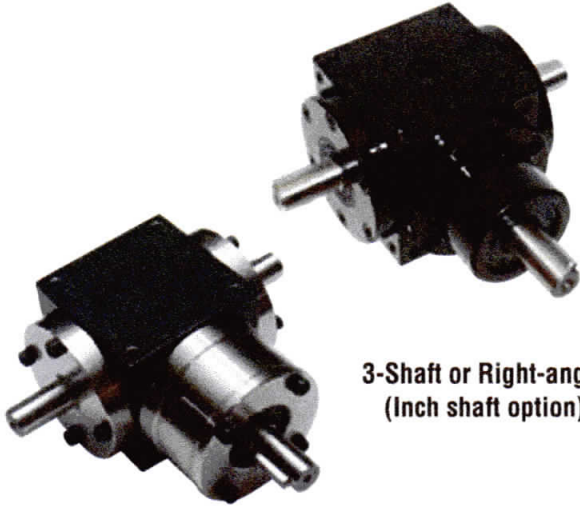
Torque 12 Nm, 2,000 rpm



Model	Shaft Diameter mm (inches)	Torque Nm (@3000 rpm) Ratio 2/1	Backlash Arcmin	Radial Load N	Axial Load N	Inertia Kg.cm ²	Weight* Kg
RTH10/RTTH10	10 (0.39)	5/6	4	95	180	0.4/0.5	1.8
RT14/RTT14	14 (0.55)	12/14	5	120	250	0.4/0.45	3.0

* Dry Weight

Additional reduction ratio made to order. Metric shaft units can be made with Inch shaft options.

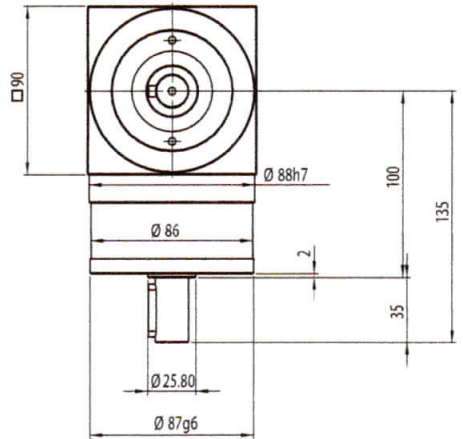
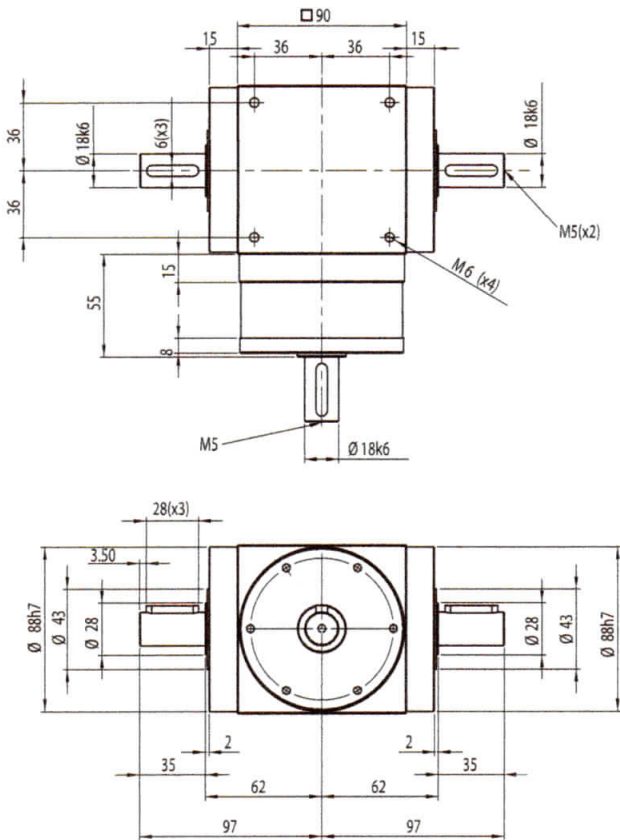


**3-Shaft or Right-angle
(Inch shaft option)**

Spiral Bevel Gearbox

18, 22 and 32mm solid shaft

- 80-260 Nm, 5 Arcmin
- Ratio 1:1, 2:1, 3:1, 1:3, 1:2
- 416 Stainless Steel, Carbon Steel, Cast Iron
- Heat Treated and Lapped Gears (low noise and reduced backlash)
- Double Lip Oil Seal (wash-down)
- High Load Ball Bearing (Radial and Axial)
- 13 month warranty



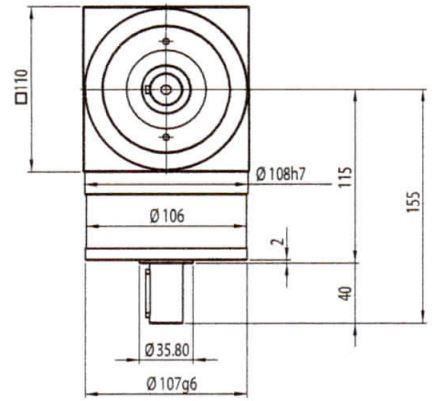
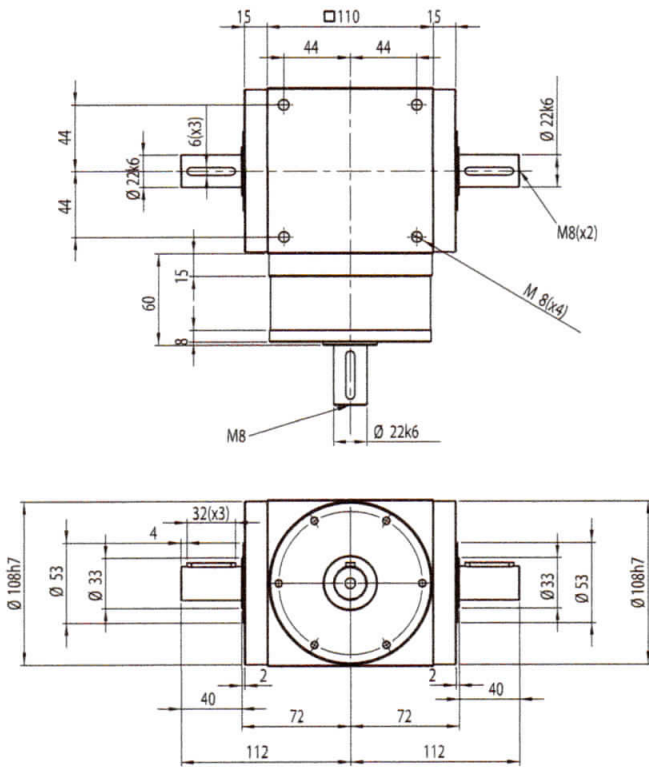
Note:
 Ratio:1~5
 Spiral Gears: Hardened and Lapped Condition
 Housing: Stainless Steel
 Lubrication: Life time grease filled

Model	Shaft Diameter mm (inches)	Torque Nm (@3000 rpm) Ratio 3/2/1	Backlash Arcmin	Radial Load N	Axial Load N	Inertia Kg.cm ²	Weight* Kg
RT18/RTT18	18 (0.708)	50/65/75	6	1450	725	3.16	7.2
RT22/RTT22	22 (0.866)	120/150/150	7	2100	1015	7.7	11
RT32/RTT32	32 (0.1.25)	270/330/360	7	2700	1210	17.06	14

* Dry Weight

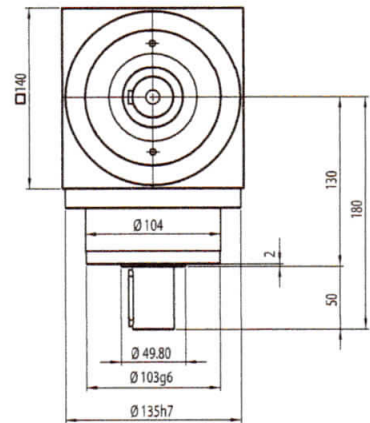
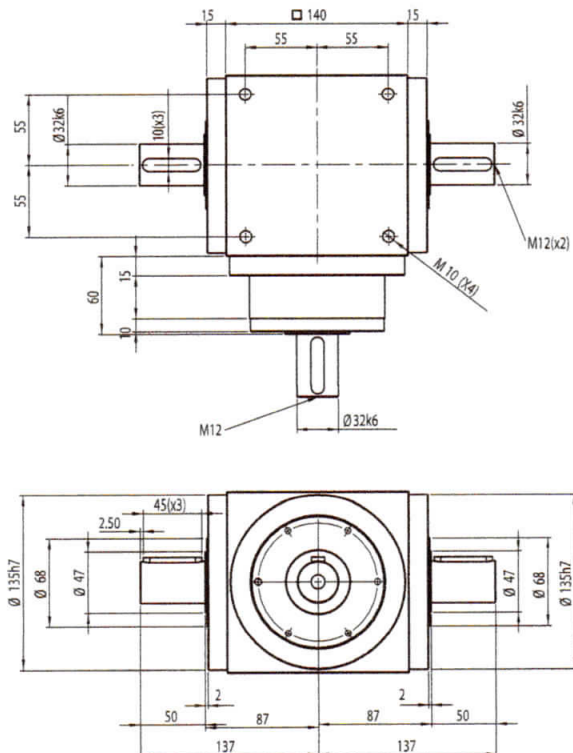
Additional reduction ratio made to order. Metric shaft units can be made with Inch shaft options.

RT/RTT 22



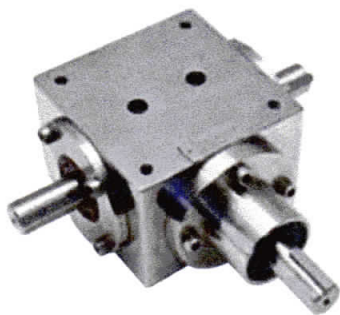
Note:
 Ratio: 1~5
 Spiral Gears: Hardened and Lapped Condition
 Housing: Stainless Steel
 Lubrication: Life time grease filled

RT/RTT 32

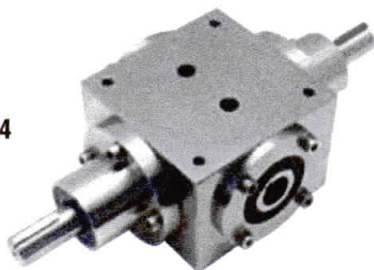


Note:
 Ratio: 1~5
 Spiral Gears: Hardened and Lapped Condition
 Housing: Stainless Steel
 Lubrication: Life time grease filled

RTT 25.4



RTT 25.4



RTTH 25.4

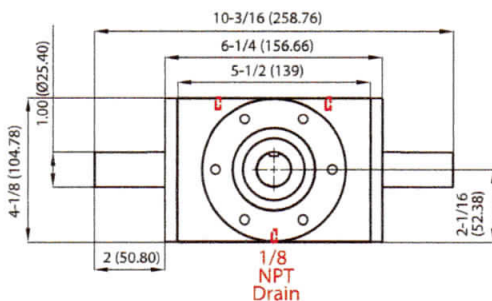
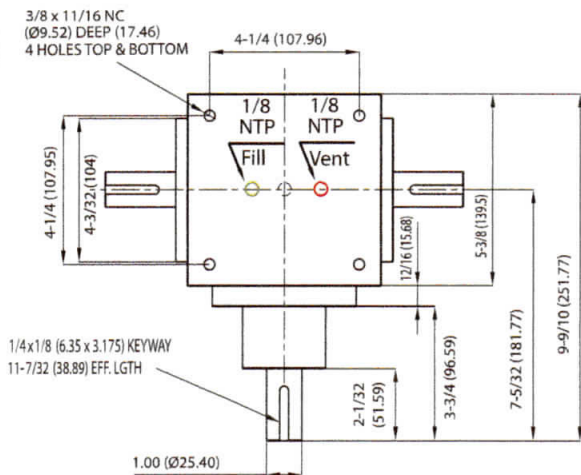
Spiral Bevel Gearbox

25.4mm (1 inch) Solid or Hollow Shaft

- 180 Nm, 5 Arcmin
- Ratio 1:1, 2:1, 3:1, 1:3, 1:2
- 416 Stainless Steel, Carbon Steel, Cast Iron
- Heat Treated and Lapped Gears (low noise and reduced backlash)
- Double Lip Oil Seal (wash-down)
- High Load Ball Bearing (Radial and Axial)
- 13 month warranty

Hollow, 3-Shaft or Right-angle (Inch shaft option)

6



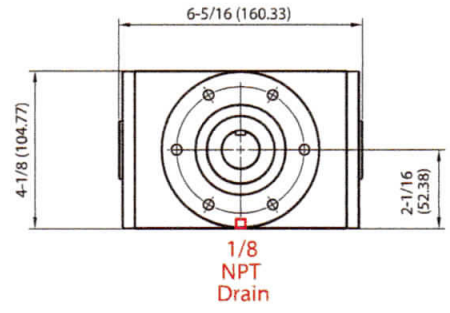
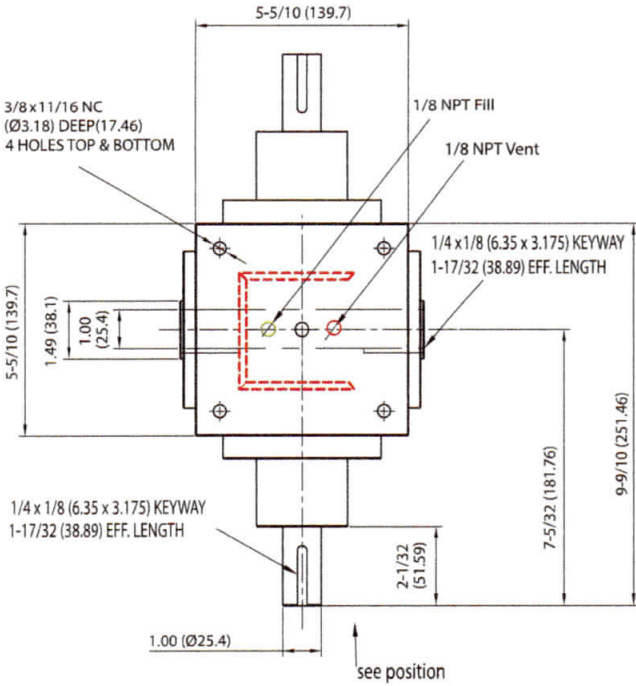
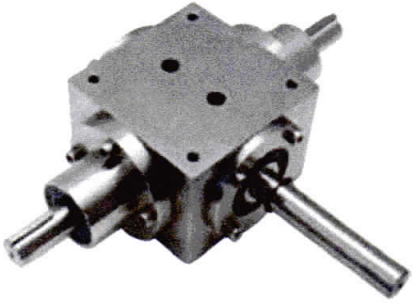
Model	Shaft Diameter mm (inches)	Torque Nm (@3000 rpm) Ratio 2/1	Backlash Arcmin	Radial Load N	Axial Load N	Inertia Kg.cm ²	Weight* Kg
RTT25.4	25.4 (1)	90/105	6	2100	1050	7.7	17.2
RTTH25.4	25.4 (1)	91/106	7	2100	1050	7.7	17.9

* Dry Weight

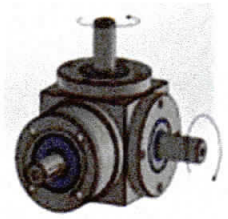
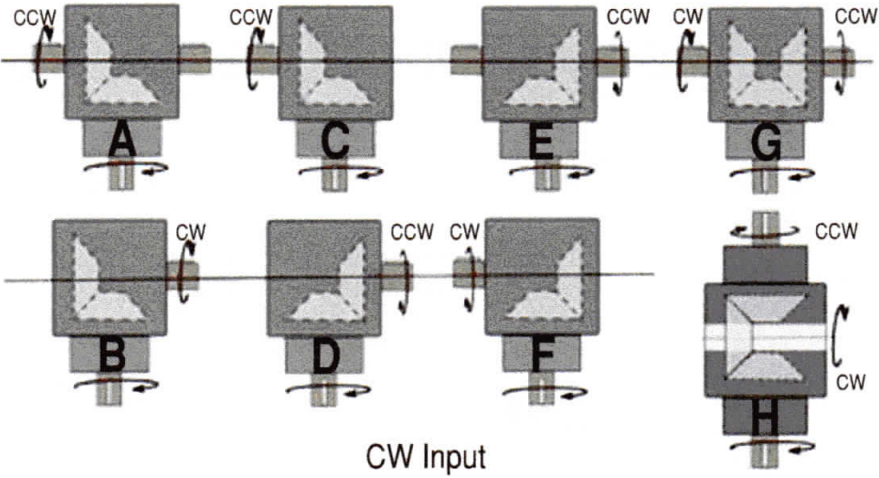
Additional reduction ratio made to order. Metric shaft units can be made with Inch shaft options.

RTTH 25.4

RTTH 25.4



Ordering Information



Additional shaft options:
Z-Perpendicular Planes.

Spiral Bevel Gearbox Part Number and Ordering Information

RTT18-A-S1:2

- RT = Right-angle
- RTT = 3 Shaft style
- RTTH = Hollow
- A,B,C = Output Shaft Rotation
- Ratio Reducer: 1:1, 1:2, 1:3, 1:4, 1:5
- Ratio Increaser: S1:2, S1:3, S1:4, S1:5

Rotary Motion Control Products for Printing, Packaging, Converting, Medical, and Food Packaging Machinery.

Vision

At Rototime, we are dedicated to making precision timing control phase shifter, spiral bevel gearbox and flexible shaft couplings, products that are made without error. The products we offer decreases setup time, reduces machine breakdown, run at optimum capacity, and reduces energy loss.

Value

Our products are made with highest quality material with low environmental impact at a reasonable price. We believe in creating value for customers by innovating and improving our products and providing before and after sales support. A long term business relationship built on trust, respect and continued responsible partnership.

Quality in printing, packaging, converting, medical, oil/gas and food process machinery are increased with Zero maintenance and Low Mean Time Between Failure products.

Best in

Quality

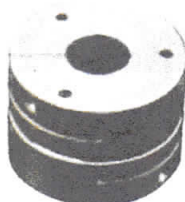
Price

Custom Solutions for Today's Machinery

Zero Backlash Couplings



Encoder Disc



Disc



Jaw

- 0.4 mm – 60 mm Bore Range
- 0.4 – 540 Nm
- 3000 - 10,000 RPM



FACT North America LLC www.rototime.com Info@rototime.com

Rototime is a Class 7, Federal Registered Trademark 2017